



# TOW-TRUST TOWBARS

Tow-Trust Towbars Technical Support

Email - [technical@tow-trust.co.uk](mailto:technical@tow-trust.co.uk)

Phone: 01827 717412 / WhatsApp: 07849811772

## PRO-PARK-FT-1 FORD TRANSIT VAN 2019 > FITTING INSTRUCTIONS

Part Number	PRO-PARK-FT-1	Document Number	TECPRO-PARK-FT-1
Issue Number	Issue 2	Vehicle Covered	Ford Transit

### Contents

Item	Description	QTY	Item	Description	QTY	Item	Description	QTY
 CON-22500657CR	2 x Short Extension cables / 2 x Long Extensions	4	 ASG-17027	Parking Sensor Carrier	4	 ASG-17028	Parking Sensor Bung	4
 DT-PRO-PARK	Drilling Template	1	 PRO-PARK-AN12	120* 4.8 Cable Tie Black	4	 PRO-PARK-AM10 PRO-PARK-AM10Y	100* 2.5 Cable Tie Black 100* 2.5 Cable Tie Yellow	12 12

### Please note:

A PRO-STEP is NOT included and must be ordered separately.

A 27mm Hole Cutter is NOT included.

**1**



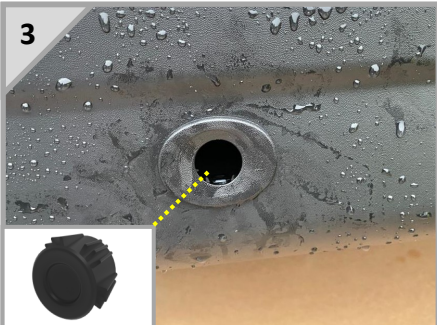
If required remove the bumper to gain access to the reversing sensors.

**2**



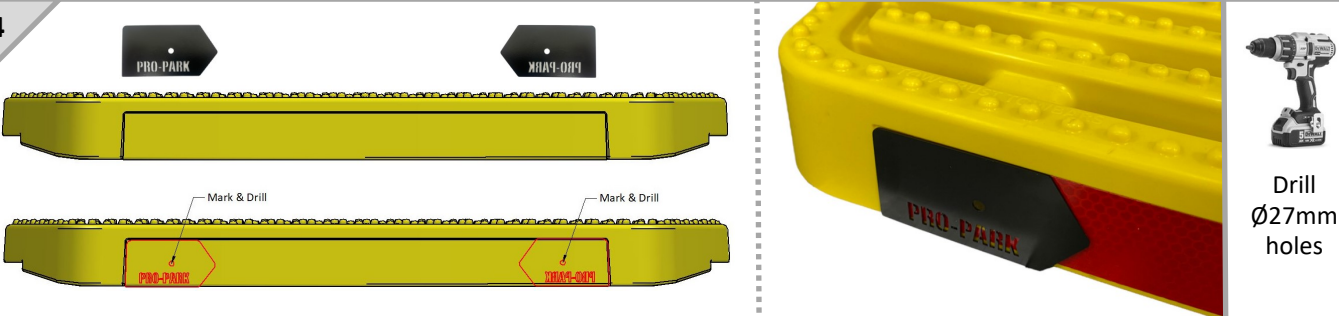
Remove the 4 OEM parking sensors from the rear bumper, leaving the carriers in the bumper.

**3**



Insert the Parking sensor bungs into the OEM carriers to blank off the holes in place of the OEM Sensors. The bungs push in from the outside.

**4**



Using the **DT-PRO-PARK** drilling template place the template onto each step tread as shown above. Carefully mark and cut two 27mm holes for the carriers in each tread.

Drill Ø27mm holes





# TOW-TRUST TOWBARS

Tow-Trust Towbars Technical Support

Email - [technical@tow-trust.co.uk](mailto:technical@tow-trust.co.uk)

Phone: 01827 717412 / WhatsApp: 07849811772

## PRO-PARK-FT-1 FORD TRANSIT VAN 2019 >

### FITTING INSTRUCTIONS

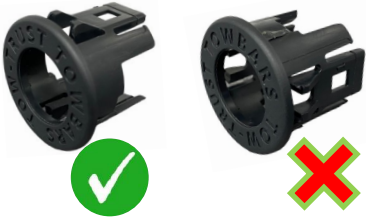
Fitting Instruction

PRO-PARK-FT-1 INSTRUCTIONS

Document Number

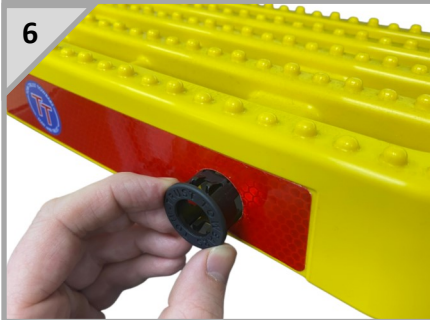
TECPRO-PARK-FT-1

5



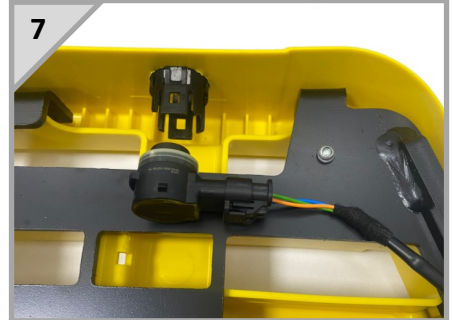
Ensure the carriers are the correct orientation before fitting them to the step.

6



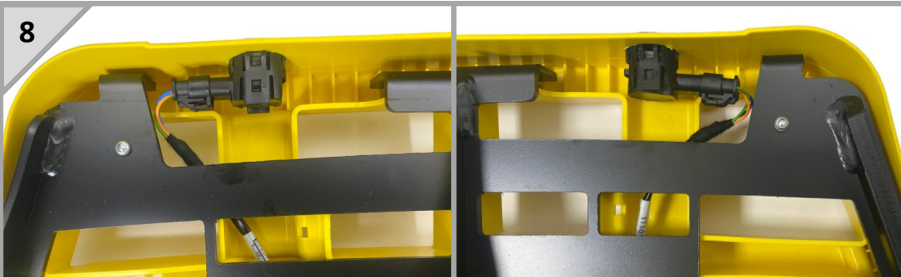
Insert the Tow-Trust carriers into the step treads pushing them in from the front.

7



Connect the extension cables to the OEM sensors.

8

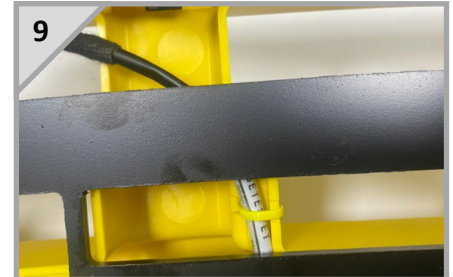


Short Cable on the inner channel of the tread

Long Cable on the outer channel of the tread

Insert the OEM parking sensors into the parking sensor carriers ensuring the OEM sensors face outward in each tread and route the cables in the channels in the step.

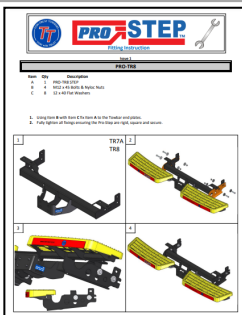
9



PRO-PARK-AM10Y Shown

Secure the extension cables to the step using the appropriate 12 small cable ties.

10



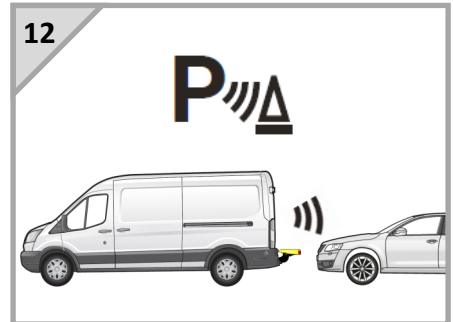
Fit the PRO STEP in accordance with the fitting instructions supplied with the PRO-STEP.

11



Connect the parking sensor cables to the original vehicle parking sensor connectors and use the larger cable ties to secure in place.

12



Once the sensors have been installed test the sensors to ensure they work correctly.

### IMPORTANT

Please ensure the PRO-STEP (not supplied) is fitted as per the installation instructions and all bolts are torqued to the correct torque setting.

We are always here to support you!

Call: 01827 717412

Email: [technical@tow-trust.co.uk](mailto:technical@tow-trust.co.uk)

WhatsApp: 07849 811 772

